



# ADA Wall Mount Lavatory, Large

## Product Specifications

### Features

- Grade A Vitreous China
- Square 20-1/4"(W) x 18-1/2"(D) x 10-1/4"(H)
- Rear Overflow
- 4" or 8" Faucet Center
- Mounting Bracket and Hardware Included
- Drilled for Concealed Arm Carrier
- Backsplash Ledge
- Barrier Free Compliant
- ADA Compliant

### Certifications

- IAPMO UPC
- ASME A112.19.2
- ADAANSI A117.1

### Carrier

- 19" concealed arm support as required to be furnished by others



**MLS10407**



**MLS10406**



To Submit	Part No.		A	B	C	D	E	F	G
	MLS10406	8" widespread	20"	18-1/8"	10-1/4"	8-1/2"	16-1/8"	15-1/2"	8-1/4"
	MLS10407	4" center	20"	18-1/8"	10-1/4"	8-1/2"	16-1/8"	15-1/2"	8-1/4"



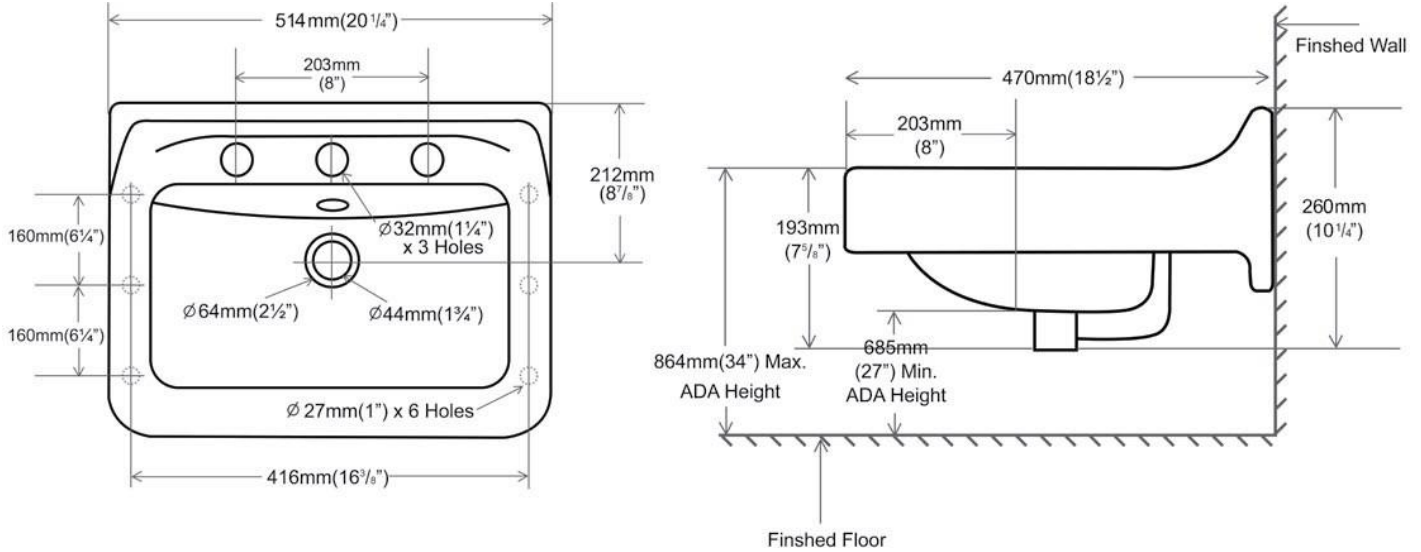
All dimensions listed are nominal. Mainline® reserves the right to make product and material changes at any time without notice.

**Contact your sales representative for more information or visit our website at [mainlinecollection.com](http://mainlinecollection.com)**

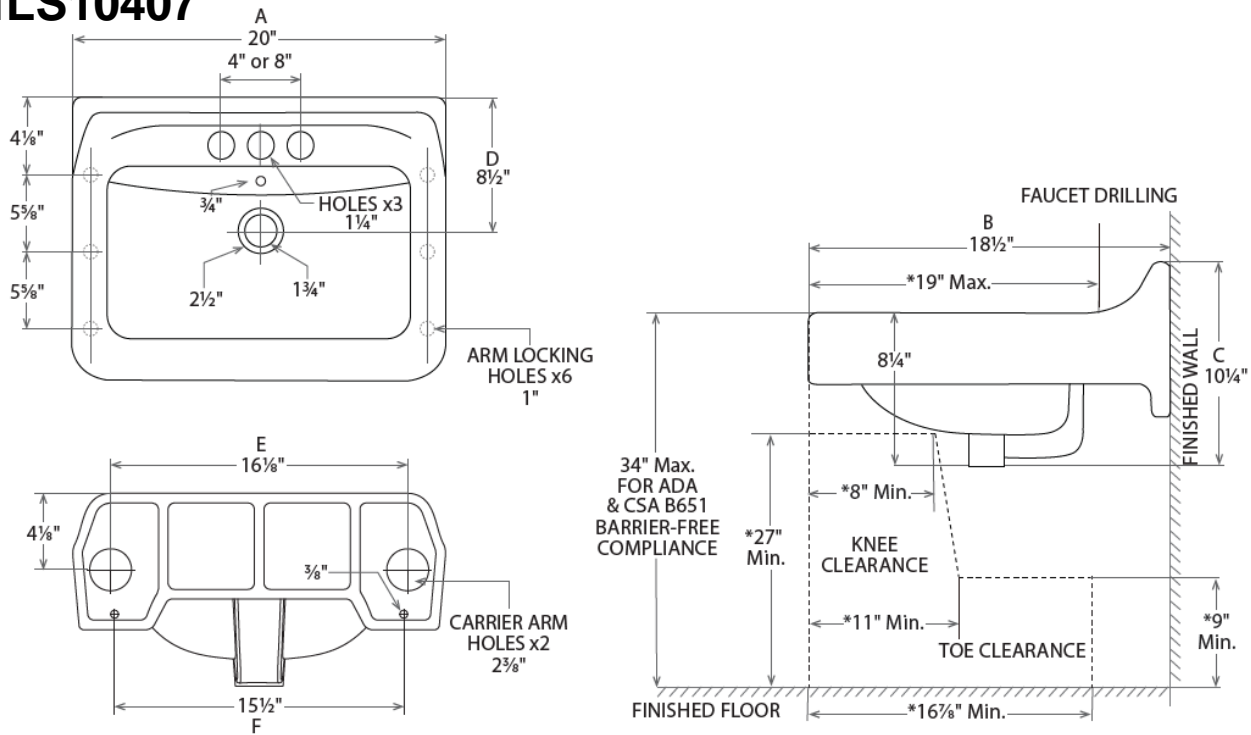
# ADA Wall Mount Lavatory, Large



## MLS10406



## MLS10407



Wall Mounted Sink with Ledge  
Weight: 38 lbs; 17.2 kgs.

Contact your sales representative for more information or visit our website at [mainlinecollection.com](http://mainlinecollection.com)