

PATENTED / PATENTS PENDING



Innovator® Cable

928-CA Innovator® CableFlex™
970-CA Innovator® Cable
971-CA Half Kit

For most tubs up to 16" deep; 21" cable

938-CA Innovator® CableFlex™
980-CA Innovator® Cable
981-CA Half Kit

For most tubs up to 24" deep; 34" cable

948-CA Innovator® CableFlex™
990-CA Innovator® Cable
991-CA Half Kit

For most tubs up to 36" deep; 48" cable

SPECIFICATIONS

FEATURES:

- Fully repairable from inside the tub.
- Fully-testable cable bath waste; test plug included
- Installs in minutes, like the Innovator®.
- ADA Handle and theft-resistant device options available.
- Self-centering; self-aligning.
- Positive mechanical stop stays open in deep water.
- Flexible stopper; no stubbed toes.

APPROVALS:

- Non-corrugated, flexible PVC tubing.
- Manufactured in compliance with ASME A112.18.2-2005/ CSA B125.2-05.
- IAPMO approved
- CSA approved

PATENTS (INNOVATOR®):

- U.S. Pat. Numbers 5,890,241; 6,637,050; 6,675,406; 7,127,752; and Patents Pending
- Canadian Patent Number 2,437,448
- Mexican Patent Numbers PA/a/2003007344 and patents pending.

PATENTS (Flexible Waste Pipe Assembly):

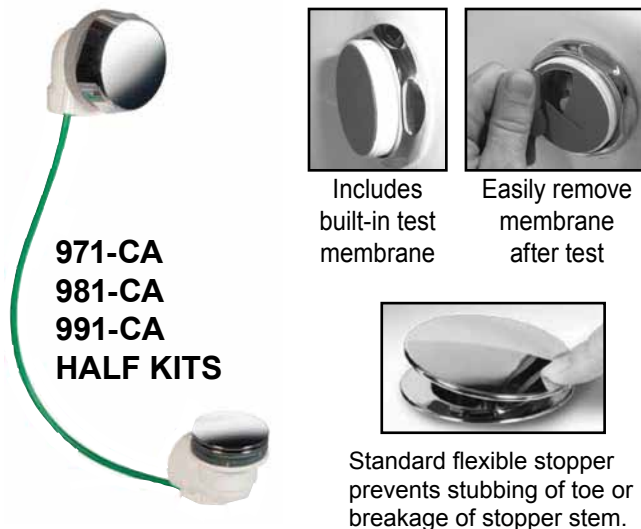
- U.S. Patents Pending
- Mexican Patent Number PA/a/2005011301

THREAD SIZE:

- 1½" – 11½ NPSM (Coarse Thread)
- 1.865" Major Diameter (outside thread diameter)
- 11.5 threads per inch

PIPING/FITTINGS:

- 928/938/948 available in PVC only
- 970/980/990 and 971/981/991 available in ABS and PVC



Repairs can easily be made from inside tub by simply removing three screws and replacing old cable.



For More Information Contact:
WATCO Manufacturing Company
 1220 South Powell Road
 Independence, MO 64057-2724
 Ph. 816-796-3900 • FAX 816-796-0875
 www.watcomfg.com

NEW! Innovator® Testable Cable

Innovator® Cable Flex™ • Innovator® Cable

970/980/990-CA

928/938/948-CA

(Same as 970/980/990 except Part #14 is flexible tubing.)

928-CA (Tubs up to 16" deep):

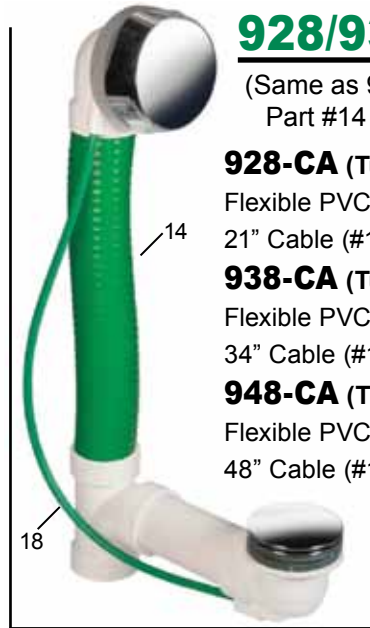
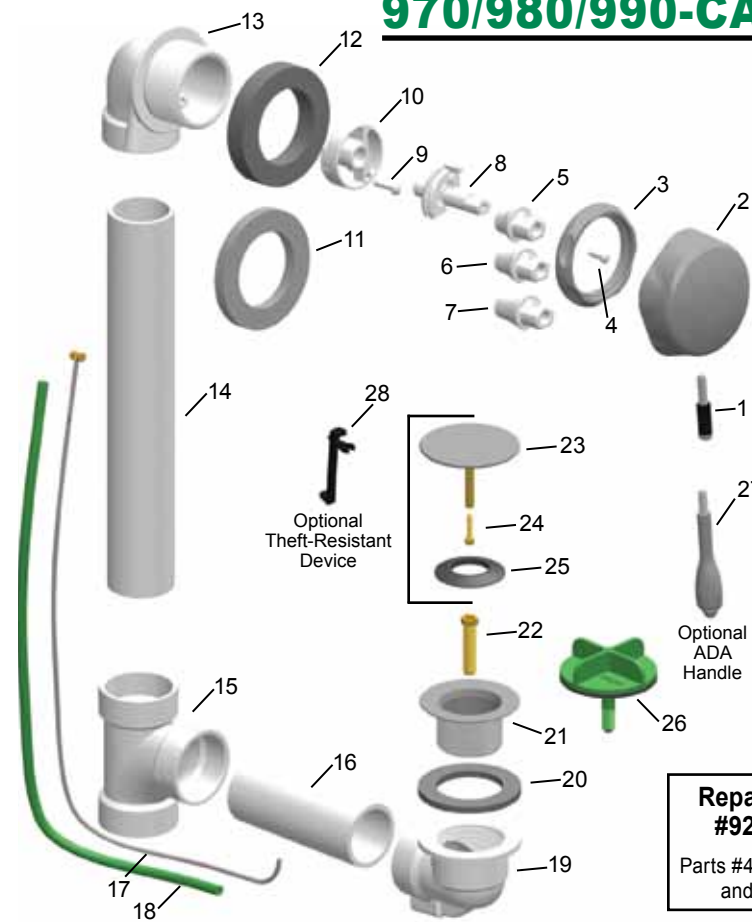
Flexible PVC Tubing: 1.5" x 11.75"
21" Cable (#18)

938-CA (Tubs up to 24" deep):

Flexible PVC Tubing: 1.5" x 20.25"
34" Cable (#18)

948-CA (Tubs up to 36" deep):

Flexible PVC Tubing: 1.5" x 32.0"
48" Cable (#18)



Innovator® Cable Half Kits:

971/981/991-CA

Parts #1 thru #13 and #17 thru #27

Optional Features:

#27 92874-__ * ADA Handle

#28 01076 Theft-Resistant Device

Repair Kit #92900

Parts #4 thru #10 and #17

ITEM	PART#	DESCRIPTION	LIST PRICE	ITEM	PART#	DESCRIPTION	LIST PRICE
1.	01032__ *	Cable Faceplate Screw, 1/4-20x1-3/4 with Screw Guide		15.	14011	1-1/2" Schedule 40 Sanitary Tee, ABS	
2.	01019__ *	Cable Faceplate		14010.....	1-1/2" Schedule 40 Sanitary Tee, PVC		
3.	01047__ *	Cable Overflow Elbow Retainer Nut		16.	970: SCHABS-4.625.....	Schedule 40 Pipe, ABS, 1.5" x 4.625"	
4.	01037.....	Cable Adapter-to-Drive Shaft Screw, #8x5/8		970: SCHPVC-4.625.....	Schedule 40 Pipe, PVC, 1.5" x 4.625"		
5.	01071	Cable Faceplate Adapter - Thin		980: SCHABS-11.75.....	Schedule 40 Pipe, ABS, 1.5" x 11.75"		
6.	01072.....	Cable Faceplate Adapter - Medium		980: SCHPVC-11.75.....	Schedule 40 Pipe, PVC, 1.5" x 11.75"		
7.	01073.....	Cable Faceplate Adapter - Thick		990: SCHABS-11.75.....	Schedule 40 Pipe, ABS, 1.5" x 11.75"		
8.	20145.....	Cable Drive Shaft		990: SCHPVC-11.75.....	Schedule 40 Pipe, PVC, 1.5" x 11.75"		
9.	01036.....	Cable Retainer-to-Overflow Elbow Screw #8x7/8		17.	20151	Cable Core	
10.	20146.....	Cable Retainer		18.	20161	Cable Conduit	
11.	10694	Overflow Elbow Gasket Half Height		19.	11016	1-1/2" Schedule 40 Cable Drain Elbow, ABS	
12.	10675.....	Overflow Elbow Gasket		14016.....	1-1/2" Schedule 40 Cable Drain Elbow, PVC		
13.	11029.....	1-1/2" Schedule 40 Cable OF Elbow, ABS		20.	10696	Drain Elbow Gasket	
14029.....	1-1/2" Schedule 40 Cable OF Elbow, PVC		21.	01016__ *	Strainer Body, Brass, 1.865" - 11.5x1.25"		
14.	970: SCHABS-11.75.....	Sch 40 Pipe, ABS, 1.5" x 11.75"		22.	20147	Cable Core Guide	
970: SCHPVC-11.75.....	Sch 40 Pipe, PVC, 1.5" x 11.75"		23.	92867-__ *	Cable Stopper Assembly – includes the following:		
980: SCHABS-20.25.....	Sch 40 Pipe, ABS, 1.5" x 20.25"		24.	20069.....	Stopper Adjusting Screw		
980: SCHPVC-20.25.....	Sch 40 Pipe, PVC, 1.5" x 20.25"		25.	11507.....	Stopper Seal, 1-1/16"		
990: SCHABS-32.00.....	Sch 40 Pipe, ABS, 1.5" x 32.00"		26.	11575	Test Plug with O-Ring-Type Gasket		
990: SCHPVC-32.00.....	Sch 40 Pipe, PVC, 1.5" x 32.00"		OPTIONAL:				
			27.	92874-__ *	ADA Handle and Handle Set Screw		
			28.	01076.....	Cable Theft-Resistant Device		

* Please indicate desired finish.